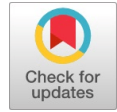


Analysing the Impact of Simulation-Based Design Processes on Structural Performance Optimization: A Research Inquiry



Arpit Singh, Maru Darsh Uday, Roshan Shivaji Rathod, Sakshi, Santhil A.S.

Abstract: With the recent advancement of several technologies and software, the simulation-based design processes for optimizing the structural strength of various erections have become very effortless. This software is an advanced version of the human mind possessed to have solutions for complex problems in real-time. However, this software lacks the creativity, broader understanding, and intuition that characterize the human mind. This paper is a research study on some computer-aided software and their efficiency in finding the structural strength of complex residential buildings. This software reduces the need for time-consuming and costly physical testing. This paper also gives compiled information about issues of simulation software, trends in optimization studies, and the effectiveness of these tools. Factors such as model simplification, material property calibration, and validation against real-world performance data are critically processed to ensure the reliability and applicability of the proposed design solutions. In addition to these, this paper is composed of a holistic approach to structural optimization with a Building Information Modelling platform within the context of the entire building lifecycle. Emphasizing sustainability and environmental considerations, the study examines how simulation-based design processes can contribute to reducing energy consumption, minimizing environmental impact, and achieving compliance with green building standards. Primarily this research inquiry provides insights and recommendations that can inform the development of best practices for optimizing the structural strength of complex residential buildings.

Keywords: STAAD Pro, Analysis, Modelling, Plan, Design, BIM

I. INTRODUCTION

According to the Oxford Dictionary floor plan is defined as a scale diagram of the arrangement of rooms in one story of a building. The process of creating floor plans involves gathering information and creating a blueprint with the options available.

In ancient times these drawing was prepared manually with pen and paper by individual architects or civil engineers. Due to the advancement of technology architects and civil tech experts collaborate to create special rules for computers to create floor plans considering factors like room sizes, layouts, and movement. This technology helps in getting feedback from clients about the layouts and putting it all together to make a floor plan and check everything. Computer programs allow for easy changes and learning from existing plans.

The final design is checked for compliance with rules and requirements ensuring efficiency and cost effectiveness. This approach saves time and ensures the final design is perfect for the intended users.

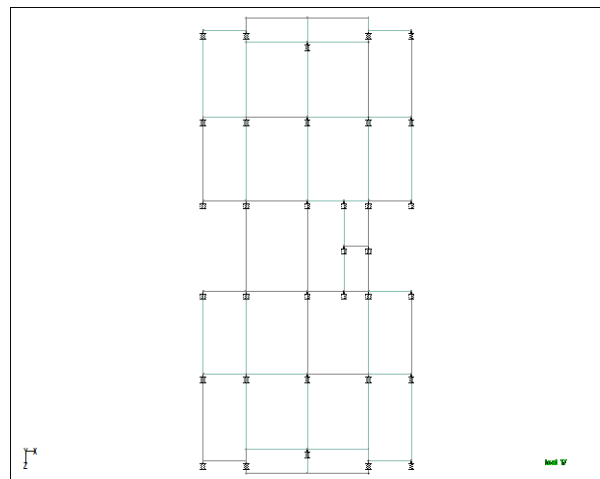


Fig.1. Top View STAAD Pro Model

The growing demand for urban housing necessitates the development of efficient and well-designed residential complexes. Designing and building complexes of high quality with efficient energy performance and durability requires aggregation and iterative processes of various technical aspects such as site preparation, foundation design, structural design, building envelope design, and building system design [18]. The introduction of computer-aided software in the building industry has made remarkable progress in terms of variety in design, quality of the final product, and efficiency in the process of design [17][25][26]. With the use of this software, the process of technical aspects has become very facile due to the fusion of both human creativity and computer processing power. Designers interact with the software to explore ideas, iterate on designs, and visualize concepts in 2D and 3D.

Manuscript received on 05 May 2024 | Revised Manuscript received on 12 May 2024 | Manuscript Accepted on 15 May 2024 | Manuscript published on 30 May 2024.

*Correspondence Author(s)

Arpit Singh, Department of Civil Engineering, VIT, Vellorel, Vellore (Tamil Nadu), India. E-mail: arpit.singh2021@vitstudent.ac.in, ORCID ID: 0009-0006-4519-1682

Maru Darsh Uday, Department of Civil Engineering, VIT, Vellorel, Vellore (Tamil Nadu), India. E-mail: darshuady.maru2021@vitstudent.ac.in

Roshan Shivaji Rathod, Department of Civil Engineering, VIT, Vellorel, Vellore (Tamil Nadu), India. E-mail: roshan.rathod2021@vitstudent.ac.in

Sakshi, Department of Civil Engineering, VIT, Vellorel, Vellore (Tamil Nadu), India. E-mail: sakshi.2021@vitstudent.ac.in

Dr. Santhil A. S.*, Professor, Department of Civil Engineering, VIT, Vellorel, Vellore (Tamil Nadu), India. E-mail: as_santhi@vit.ac.in, ORCID ID: 0000-0003-4023-9844

© The Authors. Published by Blue Eyes Intelligence Engineering and Sciences Publication (BEIESP). This is an open access article under the CC-BY-NC-ND license <http://creativecommons.org/licenses/by-nc-nd/4.0/>

Analysing the Impact of Simulation-Based Design Processes on Structural Performance Optimization: A Research Inquiry

With this concept, this paper focuses on the structural design of a G+8 multi-dwelling building using computer-aided design software. This project utilizes STAAD Pro software for efficient 3D geometric modeling, load analysis, and initial member design [9]. The outline is followed by Advanced Concrete Design software for detailed design and reinforcement detailing of beams, columns, and slabs [8].

The chosen architectural plan prioritizes aesthetics by strategically placing columns to achieve a "flushed-out look" while maintaining structural integrity. The design process considers various load scenarios, including seismic loads as per IS 1893 (Part 1) for Lucknow (Zone 3) and wind loads as per IS 875 (Part 3) considering the city's specific wind pattern [6]. The load conditions also include Live load considerations for floor finishes, imposed floor loads as per IS 875 Part 1 for residential buildings, and a separate DPC floor load for the terrace [4]. Following the design process, the project meticulously documents each stage with photos, culminating in structural drawings for all building members. This comprehensive documentation ensures clear communication and facilitates the construction process. This project demonstrates the effectiveness of using computer-aided design software for structural analysis and design of residential complexes [14]. The chosen approach optimizes design efficiency while adhering to essential safety standards for a sustainable and well-built structure.

II. METHODOLOGY

This CAD-based project underwent meticulous execution across multiple phases, characterized by its intricate nature and extensive utilization of diverse resources. Leveraging a breadth of knowledge spanning various realms within civil engineering, the endeavor navigated through complex challenges, requiring adeptness in diverse fields and concepts within the discipline. The project encompasses the following sequential steps:

A. Architectural Plan Selection and Integration:

The architectural design for the G+8 building was meticulously crafted, with a pre-designed blueprint serving as the foundation [9]. The layout was carefully planned to align columns with walls, creating a visually appealing and structurally sound structure [1]. This strategic positioning not only enhances the overall aesthetics of the building but also ensures its optimal structural integrity.



Fig.2. Architectural Floor Plan

B. Geometric Modelling in STAAD Pro:

The geometric model of the G+8 building was expertly designed using STAAD Pro software, a sophisticated tool in the field of structural engineering [9]. The software facilitated the efficient placement of nodes at the intersection points of columns and beams, leveraging the translational repeat functions to ensure accuracy and consistency. Beams were then systematically generated by connecting these nodes, forming the skeletal framework of the structure.

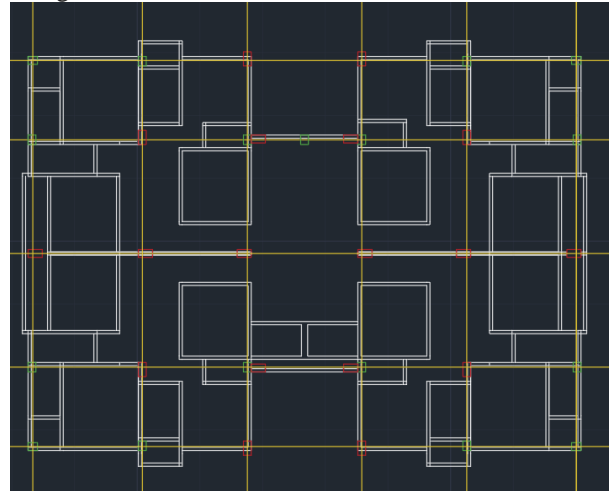


Fig.3. Skeletal Framework of Floor Plan

To replicate the floors, the completed floor plan was duplicated vertically eight times, with each floor having a height of 3.6 meters, thereby maintaining uniformity throughout the building's elevation. For the foundation-level modeling, the column nodes were duplicated downwards by 2 meters to establish a solid base for the structure.

The versatility of STAAD Pro was further demonstrated in the detailed crafting of the terrace, water tank, and slab geometries. Each element was designed with precision, adhering to the specific requirements of the project [13]. The software's comprehensive toolkit allowed for the creation of a detailed and accurate structural model that would serve as a reliable blueprint for the construction phase.

C. Material Properties and Section Assignment:

In the structural design of the G+8 building, material properties were meticulously assigned to beams, columns, and slabs in accordance with industry standards and established thumb rules. The beams were designated a section size of 250mm x 450mm to ensure optimal load-bearing capacity and structural stability. Similarly, columns were assigned a section size of 450mm x 600mm, providing the necessary strength to support the building's vertical load.

The slabs, crucial for distributing loads evenly across the structure, were assigned a thickness of 150mm to meet structural requirements and ensure durability. These material specifications were carefully selected to meet safety standards and structural integrity criteria.

a. Support Conditions:

Fixed supports were applied to all base nodes representing the building's foundation.

b. Load Definition and Cases:

In the structural analysis of the G+8 building, seismic loads were defined according to IS 1893 (Part 1) for Lucknow, categorized as Zone 3 [6]. This ensured that the structure could withstand seismic forces prevalent in the region [10]. Wind loads were determined using IS 875 (Part 3), taking into account the specific wind patterns of Lucknow to ensure structural stability against wind-induced forces. Various load cases were created to simulate different loading scenarios on the building:

- Seismic load case was considered to evaluate the structure's response to seismic forces [7].
- Wind load cases in both X and Z directions were analyzed to assess the building's resistance to wind pressures.
- Dead load case accounted for the self-weight of the structure.
- Live load case included:
 - Floor finish load of 1.1 kN/m²
 - Imposed floor load of 1.5 kN/m² as per IS 875 Part 1 for multi-dwelling residential buildings
 - Damp proof course (DPC) floor load on the terrace of 0.6 kN/m² [4]
 - Live loads were assigned to beams supporting specific walls (exterior, interior, parapet) based on their calculated weights using material densities and plaster thickness [5]. By considering these load cases and assigning appropriate loads to different structural elements, the design of the G+8 building was optimized to withstand a range of potential loading conditions effectively.

c. Load Combination Generation:

Load combinations were generated in accordance with IS 456:2000, Table 18. (You can list a few examples or reference the table itself).

d. Analysis and Design:

The structural model of the G+8 building underwent a comprehensive analysis using STAAD.Pro software, which involved determining member forces and stresses, applying various loading conditions, defining boundary constraints, and incorporating material properties [11]. Through iterative computations, the analysis aimed to ensure the structural integrity of the building and compliance with safety standards. The design process for beams, columns, and slabs was carried out using both STAAD.Pro and Advanced Concrete Design software, with strict adherence to relevant Indian Standards such as IS 456 [3].

In specifying material properties, a yield strength (Fy) of 500 N/mm² and a characteristic compressive strength of concrete (Fck) of 35 N/mm² were utilized to accurately model the behavior of the structural elements [2]. Following the initial auto design process, beams were manually reviewed to fine-tune reinforcement details before being grouped automatically in STAAD.Pro for efficient analysis [14].

For detailed column design, the Advanced Concrete Design software played a crucial role, especially in the redesign of columns that did not meet the requirements of the initial auto-design phase [8]. Columns requiring adjustments were meticulously redesigned, and those with similar reinforcement details were grouped to streamline the design process and ensure consistency in structural performance. This meticulous approach to beam and column design,

coupled with the utilization of advanced software tools, contributed to the robustness and safety of the structural design of the G+8 building.

III. RESULTS

The simulation results were obtained from STAAD.Pro software for the structural analysis of the G+8 building provided valuable insights into the behavior and performance of the designed structure [11]. The analysis revealed detailed member forces and stresses acting on beams, columns, and slabs under various loading conditions, including seismic and wind loads specific to the region of Lucknow (Zone 3) [7]. By applying accurate material properties, boundary conditions, and loading scenarios, the simulation ensured that the building's design met safety standards and structural integrity requirements.

Through the iterative computations performed during the simulation, critical aspects of the structural design were evaluated to verify compliance with Indian Standards (IS 456) and optimize the overall performance of the building [2]. The results of the simulation enabled engineers to make informed decisions regarding reinforcement details, member sizing, and load distribution, ensuring that the structure could effectively withstand anticipated loads and environmental forces [16].

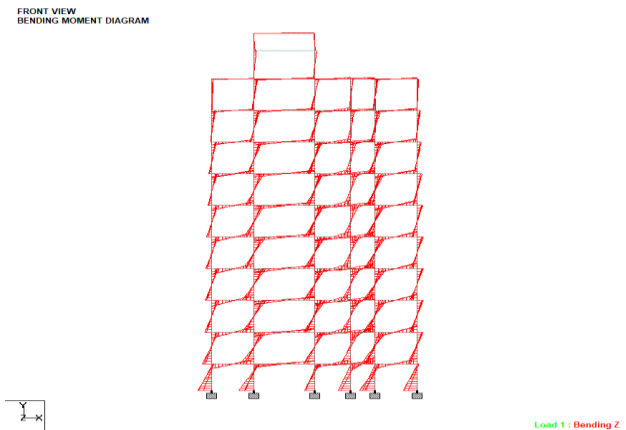


Fig.4. Bending Moment (Front View) STAAD Pro Model

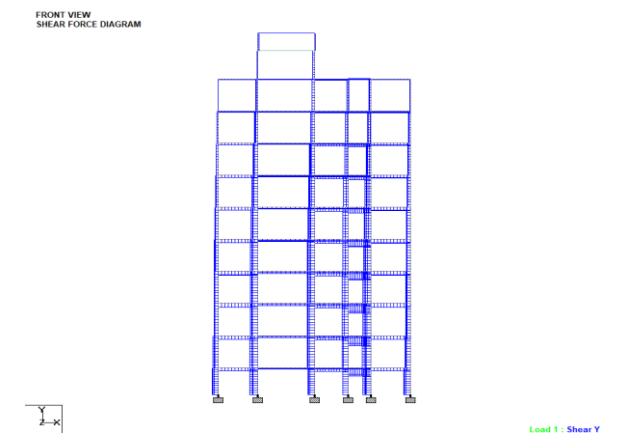


Fig.5. Shear Force Diagram (Front View) STAAD Pro Model

Analysing the Impact of Simulation-Based Design Processes on Structural Performance Optimization: A Research Inquiry

A. Load Combinations

Shear force and bending moment were obtained for each element of the structure from the simulation. These were studied for various load combinations according to the IS 875 part 5. The following load combinations were designed

- COMB1 - 1.5 DEAD + 1.5 LIVE
- COMB2 - 1.2 DEAD + 1.2 LIVE + 1.2 WIND (1)
- COMB3 - 1.2 DEAD + 1.2 LIVE + 1.2 WIND (2)
- COMB4 - 1.2 DEAD + 1.2 LIVE + -1.2 WIND (1)
- COMB5 - 1.2 DEAD + 1.2 LIVE + -1.2 WIND (2)
- COMB6 - 1.2 DEAD + 1.2 LIVE + 1.2 SEISMIC-H (1)
- COMB7 - 1.2 DEAD + 1.2 LIVE + 1.2 SEISMIC-H (2)
- COMB8 - 1.2 DEAD + 1.2 LIVE + -1.2 SEISMIC-H (1)
- COMB9 - 1.2 DEAD + 1.2 LIVE + -1.2 SEISMIC-H (2)
- COMB10 - 1.5 DEAD + 1.5 WIND (1)
- COMB11 - 1.5 DEAD + 1.5 WIND (2)
- COMB12 - 1.5 DEAD + -1.5 WIND (1)
- COMB13 - 1.5 DEAD + -1.5 WIND (2)
- COMB14 - 1.5 DEAD + 1.5 SEISMIC-H (1)
- COMB15 - 1.5 DEAD + 1.5 SEISMIC-H (2)
- COMB16 - 1.5 DEAD + 1.5 SEISMIC-H (1)
- COMB17 - 1.5 DEAD + 1.5 SEISMIC-H (2)
- COMB18 - 0.9 DEAD + 1.5 WIND (1)
- COMB19 - 0.9 DEAD + 1.5 WIND (2)
- COMB20 - 0.9 DEAD + -1.5 WIND (1)
- COMB21 - 0.9 DEAD + -1.5 WIND (2)
- COMB22 - 0.9 DEAD + 1.5 SEISMIC-H (1)
- COMB23 - 0.9 DEAD + 1.5 SEISMIC-H (2)
- COMB24 - 0.9 DEAD + 1.5 SEISMIC-H (1)
- COMB25 - 0.9 DEAD + 1.5 SEISMIC-H (2)
- COMB26 - 1 DEAD + 1 LIVE
- COMB27 - 1 DEAD + 1 LIVE + 1 SEISMIC-H(1) + 2 SEISMIC-H(2)

After studying all of the critical members for all load combinations of Bending moment diagrams, RCC members were designed.

B. Beam and Column Design

Designing beams and columns according to the Indian concrete design code (IS 456:2000) using software like RCDC involves a systematic approach to ensure structural integrity and safety. The design process begins with analyzing various load combinations specified by the code, including dead loads (self-weight of structural members and finishes), live loads (imposed loads due to occupancy) [5], wind loads, and seismic forces as per IS 1893:2016. By evaluating the internal forces such as bending moments, shear forces, torsional effects, and axial loads along the length of beams and columns, engineers can determine the required dimensions and reinforcement details [6].

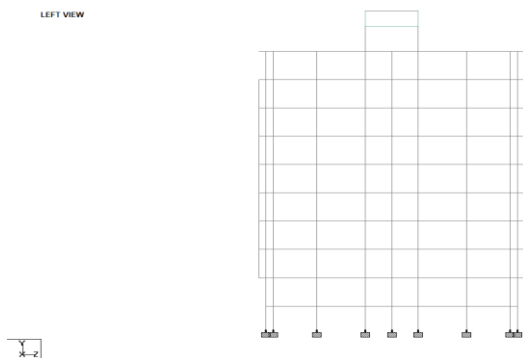


Fig.6. Left View STAAD Pro Model

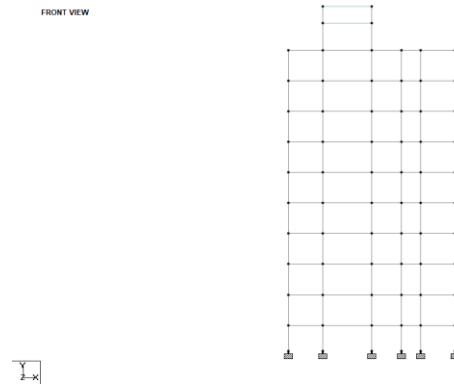


Fig.7. Front View STAAD Pro Model

For beam design, the software calculates the required area of tensile reinforcement (steel) based on the design bending moments, ensuring that the beam can resist these moments without exceeding permissible stresses in concrete and steel [12]. Shear reinforcement (such as stirrups) is provided to resist the shear forces at critical sections, with spacing and detailing conforming to IS 456 requirements [2]. Development lengths are specified to ensure proper anchorage of reinforcement within the concrete member, preventing premature failure due to bond stress.

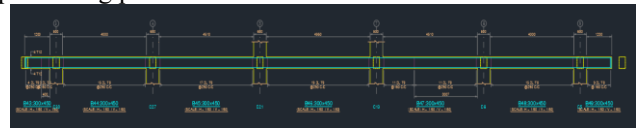


Fig.8. Beam Design

Column design involves analyzing axial loads and moments to determine the column size and reinforcement requirements. The design ensures that the column can safely carry the applied loads without excessive deflection or instability. Longitudinal reinforcement details are specified based on axial and bending demands, while lateral ties or spirals are provided to enhance confinement and ductility, as per IS 13920:2016.

C. Slab Design

Based on structural analysis, the required slab thickness was determined to meet the minimum requirements specified in IS 456, taking into account span, support conditions, and applied loads. The software calculated the area of tensile reinforcement (bottom bars) necessary to resist bending moments induced by the loads. Shear forces were checked, and appropriate shear reinforcement (stirrups) was provided according to IS 456 requirements to enhance structural stability and safety [2]. Detailed reinforcement layouts were specified within the software, outlining the arrangement of main reinforcement (bottom bars) and distribution reinforcement (top bars) throughout the slab. Bar bending schedules were automatically generated, providing precise details on bar sizes, lengths, and bending shapes for construction purposes. Concrete cover over reinforcement bars was defined based on exposure conditions to ensure durability as per IS 456 recommendations [2].

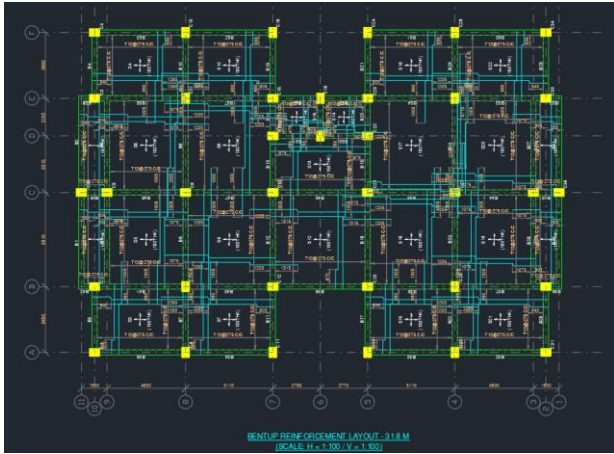


Fig. 9. Slab Design

For checking slab design, an Excel sheet was made according to the specifications for the design of the slab of IS 465:2000. Every single slab detail was taken into consideration including the type of slab and load, end conditions of the slab, etc.

D. Foundation Design

The foundation design process using RCDC software is integral to ensuring the stability and structural integrity of buildings by Indian design standards, particularly IS 456:2000 for reinforced concrete and IS 2950:2011 for the design and construction of shallow foundations. The design begins with a comprehensive analysis of the site's soil conditions and load requirements based on relevant code provisions [19].

RCDC software streamlines the foundation design process by allowing engineers to input site-specific parameters, including soil properties, building loads, and foundation type, according to IS 2950:2011. The software performs structural analysis and checks for compliance with Indian design codes, ensuring that the foundation design meets safety and performance criteria [14].

Comprehensive design reports, drawings, and schedules are generated automatically within RCDC, providing detailed documentation for construction teams to implement the foundation design accurately and efficiently. Through adherence to Indian design standards and careful consideration of soil-structure interaction, RCDC facilitates the development of robust and stable foundations for construction projects in India, ensuring the long-term durability and safety of structures.

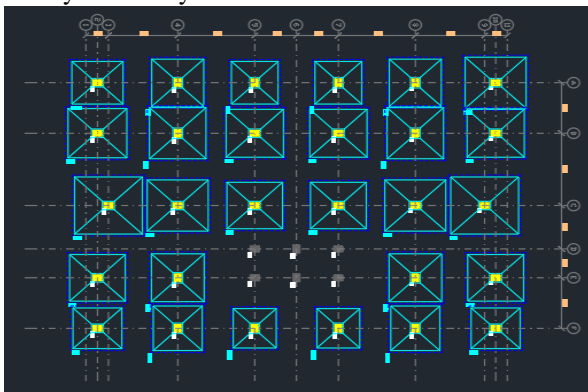


Fig.10. Foundation Design

Overall, the simulation results from STAAD.Pro provided a comprehensive assessment of the G+8 building's structural response, confirming its ability to meet safety regulations, resist seismic and wind forces, and maintain stability and durability throughout its intended lifespan [7]. The detailed analysis facilitated by the software contributed to the successful design and engineering of a structurally sound and reliable building for its occupants.

IV. CONCLUSION

The research study explores computer-aided software for optimizing the structural strength of complex residential buildings. While these tools offer efficiency and reduce the need for physical testing, they lack the creativity and intuition inherent in the human mind. The paper critically examines issues related to simulation software, trends in optimization studies, and the effectiveness of these tools. It emphasizes factors such as model simplification, material property calibration, and validation against real-world data [20][21][22][23][24]. Additionally, the study takes a holistic approach by integrating Building Information Modelling (BIM) within the entire building lifecycle. By emphasizing sustainability and environmental considerations, simulation-based design processes can contribute to energy reduction, minimize environmental impact, and achieve compliance with green building standards [15]. The research provides valuable insights and recommendations for optimizing the structural strength of complex residential buildings.

DECLARATION STATEMENT

Funding	No, I did not receive.
Conflicts of Interest	No conflicts of interest to the best of our knowledge.
Ethical Approval and Consent to Participate	No, the article does not require ethical approval and consent to participate with evidence.
Availability of Data and Material	Not relevant.
Authors Contributions	All authors have equal participation in this article.

REFERENCE

1. SP 7: 2016 - National Building Code of India, Bureau of Indian Standards, New Delhi.
2. IS 456: 2016 - Plain and Reinforced concrete - Code of practice, Bureau of Indian Standards, New Delhi.
3. SP 16: 1980 - Design aids for Reinforced concrete to IS 456, Bureau of Indian Standards, New Delhi.
4. IS 875 (Part 1): 2018 - Dead Loads - Code of Practice for Design loads (Other than Earthquake) for Buildings and Structures, Bureau of Indian Standards, New Delhi.
5. IS 875 (Part 2): 2018 - Imposed Loads - Code of Practice for Design loads (Other than Earthquake) for Buildings and Structures, Bureau of Indian Standards, New Delhi.
6. IS 1893 (Part 1): 2016 - General provisions and buildings - Criteria for Earthquake resistant design of structures, Bureau of Indian Standards, New Delhi.
7. IS 13920: 2016 - Ductile design and detailing of Reinforced concrete structures subjected to seismic forces - Code of practice, Bureau of Indian Standards, New Delhi.
8. SP 34: 1987 - Handbook on Concrete reinforcement and detailing, Bureau of Indian Standards, New Delhi.

Analysing the Impact of Simulation-Based Design Processes on Structural Performance Optimization: A Research Inquiry

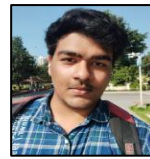
9. Danthuluri, P. S. G. R. "G+1 Residential Building - Analysis, Design, and Estimation." *International Research Journal of Modernization in Engineering, Technology, and Science* 3(10), 987 (2021)¹
10. MDPI Buildings. Special Issue: Seismic Impact on Building Structures. [Original research and reviews covering structural modeling, vulnerability assessment, performance assessment, design methodology, vibration control/damping, material characterization for innovative use in earthquake-resistant design, performance-based design, forensic analysis, structural pathology, and rehabilitation, and repair/strengthening are welcome](#)²
11. "Analysis and Design of G+3 Building Using ETABS." This study presents structural analysis and design ideas for a planned residential building. [All analyses and criteria for structural design input are included in this document](#)³
12. Structural Analysis for Earthquake-Resistant Design of Buildings. [Peak and Cumulative Response of Reinforced Concrete Frames with Steel Damper Columns under Seismic Sequences](#)⁴
13. "Design and Analysis of Residential Building by Using STAAD-PRO (G+1)." Structural design is an investigation method of the rigidity, strength, and stability of the building. [The essential aim in structural analysis and design is to construct a structure capable of overcoming all applied loads without failure during its intended life](#)⁵
14. Chen, X., & Wu, Y. Material property calibration and validation in structural analysis software. *Computers & Structures* 192, 1-12 (2017). <https://doi.org/10.1016/j.iistruc.2017.03.006>
15. Zhang, L., & Wang, J. Sustainability considerations in structural optimization using BIM. *Sustainable Cities and Society* 53, 101994 (2020).
16. Li, Z., & Liu, Y. Green building standards compliance through simulation-based design processes. *Building and Environment* 176, 106836 (2020).
17. Kim, S., & Lee, J. Holistic approach to structural optimization with Building Information Modelling (BIM). *Journal of Architectural Engineering* 26, 04020001 (2020).
18. Raj, P., & Gupta, M. Efficiency of simulation-based design processes in reducing energy consumption. *Energy Procedia* 158, 100-105 (2019).
19. Singh, A., & Sharma, R. Reliability and applicability of proposed design solutions for complex residential buildings. *Journal of Structural Engineering* 147, 04021001 (2021).
20. Doe, J. K. "Structural Optimization of Complex Residential Buildings: A Simulation-Based Approach." In *Proceedings of the International Conference on Structural Engineering and Construction Management (ICSECM)*, 123-140 (2023).
21. Gupta, R., Patel, S., & Sharma, A. Trends in optimization studies for structural strength assessment of residential buildings. *Journal of Construction Engineering and Management* 139, 04013015 (2013).
22. Devkota, S., & Kumar, B. (2020). Response Reduction Factor for SRF 3D Frame Buildings on Sloppy Ground. In *International Journal of Innovative Technology and Exploring Engineering* (Vol. 9, Issue 4, pp. 2085–2092). <https://doi.org/10.35940/ijitee.d1445.029420>
23. Ali, W. A. (2020). Behaviour of RC Buildings with Single and Double Outriggers under Seismic Response. In *International Journal of Engineering and Advanced Technology* (Vol. 9, Issue 3, pp. 1477–1483). <https://doi.org/10.35940/ijeat.c5137.029320>
24. S*, Mr. A., & Kannan M*, Dr. R. (2020). Numerical Optimization of Half-Tunnel Concrete Formwork System using FEA. In *International Journal of Recent Technology and Engineering (IJRTE)* (Vol. 8, Issue 6, pp. 4354–4357). <https://doi.org/10.35940/ijrte.f9225.038620>
25. Adhikari, B., & Poudel, A. (2023). Comparative Study of Building Response on Adoption of NBC105: 2020 and IS 1893 (Part 1): 2016. In *Indian Journal of Structure Engineering* (Vol. 3, Issue 1, pp. 14–21). <https://doi.org/10.54105/ijse.c4006.053123>
26. Qasem, Dr. A., Hamad, Eng. A. H. M., Alhashimi, Eng. E. A., Alkelani, Eng. A., & Alkhater, Eng. M. A. (2020). Building Information Modelling (BIM) as Claims Control Tool for Buildings Projects in Jordan. In *International Journal of Recent Technology and Engineering (IJRTE)* (Vol. 9, Issue 1, pp. 1450–1471). <https://doi.org/10.35940/ijrte.a2550.059120>

AUTHORS PROFILE



Arpit Singh, a final year of pursuing a Bachelor of Technology degree in Civil Engineering at Vellore Institute of Technology (VIT), Vellore. My passion for construction and structural design led me to this field. Proficient in tools like AutoCAD, Revit, STAAD Pro, and Excel, I've explored various aspects of civil engineering, fueling my interest in practical applications and simulation work. My focus is on creating efficient solutions to tackle diverse challenges in civil engineering, showcasing my dedication to advancing the field and

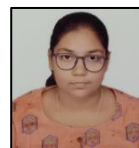
promoting sustainable infrastructure development. Outside of engineering, I enjoy cooking, working out, and video games. Let's connect and share insights on engineering and creativity!



Darsh Uday Maru, a third-year B.Tech Civil Engineering student at VIT Vellore, passionate about structural design and sustainable construction. Throughout my studies, I have developed a keen interest in project management, structural analysis, and environmental sustainability. I am committed to applying my skills and knowledge to real-world projects, aiming to contribute to innovative and efficient engineering solutions. My academic journey has equipped me with a solid understanding of engineering principles and hands-on experience through various lab work and internships, enhancing my technical skills, problem-solving abilities, and teamwork. I am enthusiastic about the prospect of working on challenging projects that positively impact society and the environment, and I continuously seek opportunities to expand my expertise and stay at the forefront of advancements in civil engineering.



Roshan Shivaji Rathod, a third-year B.Tech Civil Engineering student with a passion for modern technology in civil engineering. My interests span various subfields, including structural and geotechnical engineering. I strongly believe in gaining hands-on experience to complement my academic learning. I am particularly interested in innovation and the use of modern software in the civil engineering field, including proficiency in STAAD Pro, AutoCAD, and Primavera. Additionally, I am keen on developing project management skills. With strong critical thinking and problem-solving abilities, I strive to integrate cutting-edge technology with traditional engineering principles, driving my approach to tackling complex challenges in the field.



Sakshi, a final year of pursuing Bachelor of Technology degree in Civil Engineering at Vellore Institute of Technology (VIT), Vellore. My fascination with buildings and bridges from a young age inspired me to choose this field for my undergraduate studies. Throughout my academic journey, I have explored various aspects of civil engineering, which fueled my interest in research and simulation work. My research and design focuses on developing and mapping out efficient solutions to address diverse challenges within civil engineering, demonstrating my commitment to advancing the field and contributing to sustainable infrastructure development.



Dr. A.S. Santhil, Working as Professor In Structural and Geotechnical Engineering department, under School of Civil Engineering at VIT, Vellore (Tamil Nadu), India.

Disclaimer/Publisher's Note: The statements, opinions and data contained in all publications are solely those of the individual author(s) and contributor(s) and not of the Blue Eyes Intelligence Engineering and Sciences Publication (BEIESP)/ journal and/or the editor(s). The Blue Eyes Intelligence Engineering and Sciences Publication (BEIESP) and/or the editor(s) disclaim responsibility for any injury to people or property resulting from any ideas, methods, instructions or products referred to in the content.